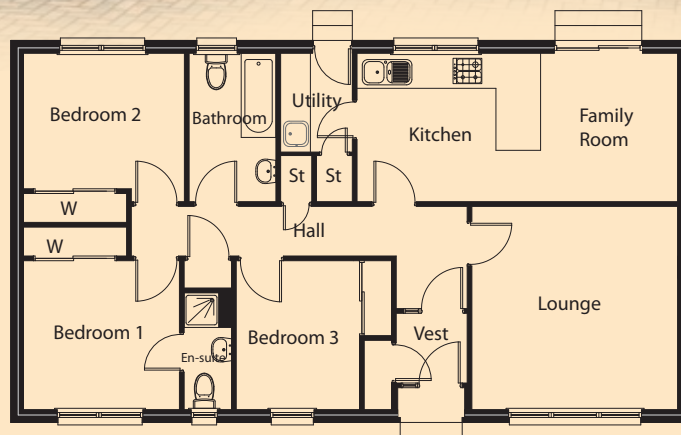


Corran



Floor Plan

Lounge	4.15m x 4.10m	Bedroom 2	3.24m x 2.73m
Kitchen	3.70m x 2.99m	Bedroom 3	3.00m x 2.48m
Family	2.99m x 2.76m	Bathroom	2.99m x 1.75m
Bedroom 1	3.14m x 3.00m	Utility	1.99m x 1.45m
En-Suite	2.36m x 0.95m		

Floor Area: 94.83sqm Frontage - 13.7m Depth - 7.7m

The information and illustration above are intended as a preliminary guide only.