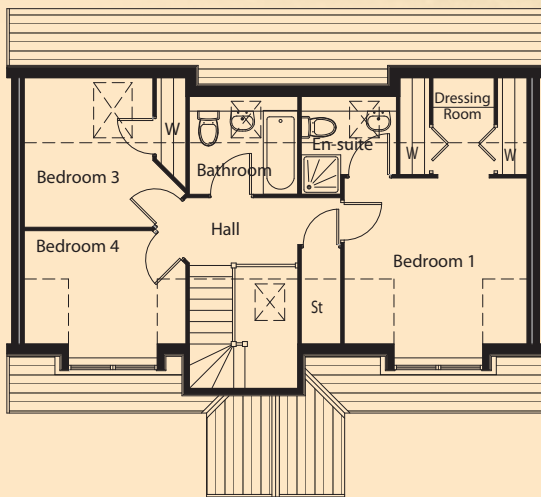
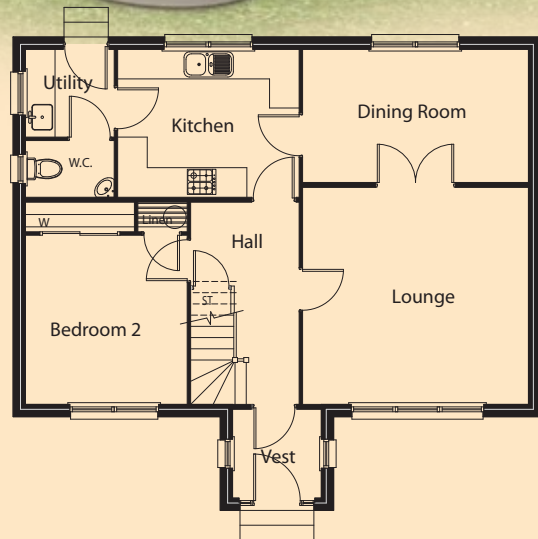


# Dunvegan



First Floor Plan



Ground Floor Plan

Lounge	4.58m x 4.44m	Bedroom 1	3.71m x 3.75m
Kitchen	3.68m x 3.00m	En-Suite	1.93m x 1.98m
Dining	4.58m x 2.70m	Bedroom 2	3.43m x 3.28m
Utility	1.80m x 1.78m	Bedroom 3	2.55m x 3.03m
W.C.	1.80m x 1.15m	Bedroom 4	3.28m x 2.70m
Vestibule	1.80m x 1.80m	Bathroom	2.20m x 1.97m

Floor Area: 156.62sqm Frontage - 10.70m Depth - 9.6m

The information and illustration above are intended as a preliminary guide only.