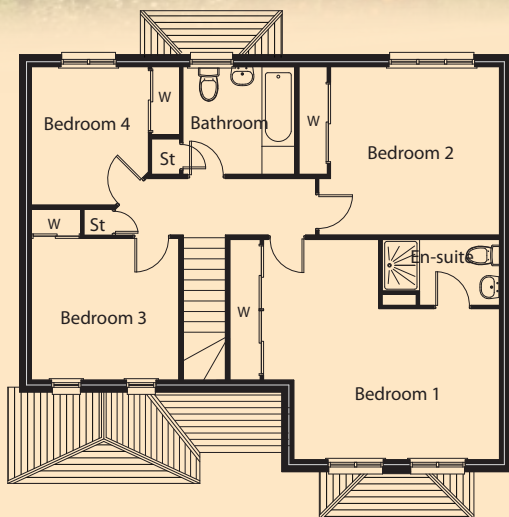
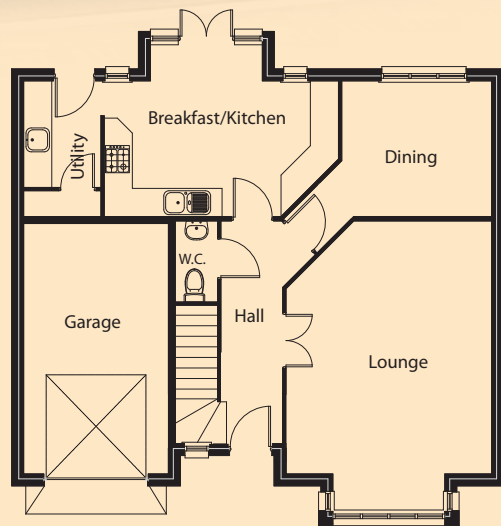


# Killin



First Floor Plan



Ground Floor Plan

Lounge	6.17m x 4.39m	Bedroom 1	5.04m x 4.70m
Kitchen/Breakfast	5.00m x 3.67m	Bedroom 2	3.60m x 3.60m
Dining	3.20m x 2.90m	Bedroom 3	3.02m x 3.14m
Utility	2.27m x 1.65m	Bedroom 4	2.95m x 2.50m
Garage	5.34m x 3.09m	Bathroom	2.40m x 2.30m
W.C.	1.88m x 0.90m	En-Suite	2.50m x 1.40m

Floor Area: 156.62sqm (incl garage @ 16.50sqm) Frontage - 10.50m Depth -

The information and illustration above are intended as a preliminary guide only.