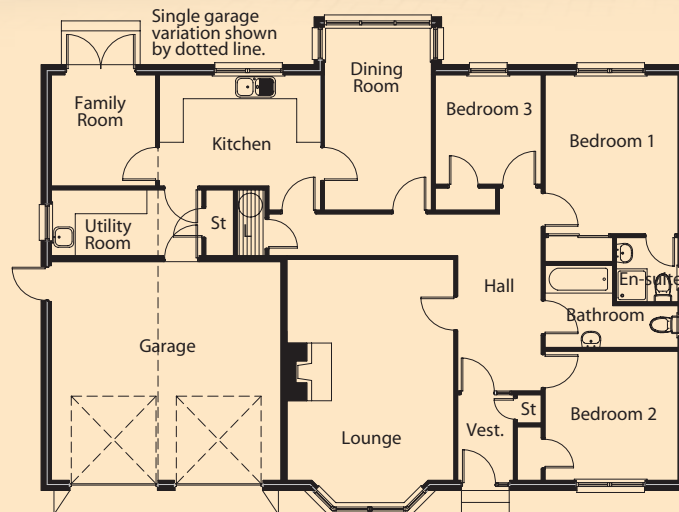


Lochcarron



Floor Plan

Lounge	6.11m x 4.19m	Bedroom 2	3.34m x 3.24m
Kitchen	4.05m x 2.80m	Bedroom 3	2.75m x 2.65m
Dining	4.57m x 2.69m	Utility	3.78m x 1.65m
Family	2.79m x 2.62m	Bathroom	3.35m x 2.06m
Bedroom 1	3.99m x 3.34m	En-Suite	1.65m x 1.55m
		Garage	5.49m x 5.77m

Floor Area: 163.06sqm (incl garage @ 31.7sqm) Frontage - 16.26m Depth -

The information and illustration above are intended as a preliminary guide only.