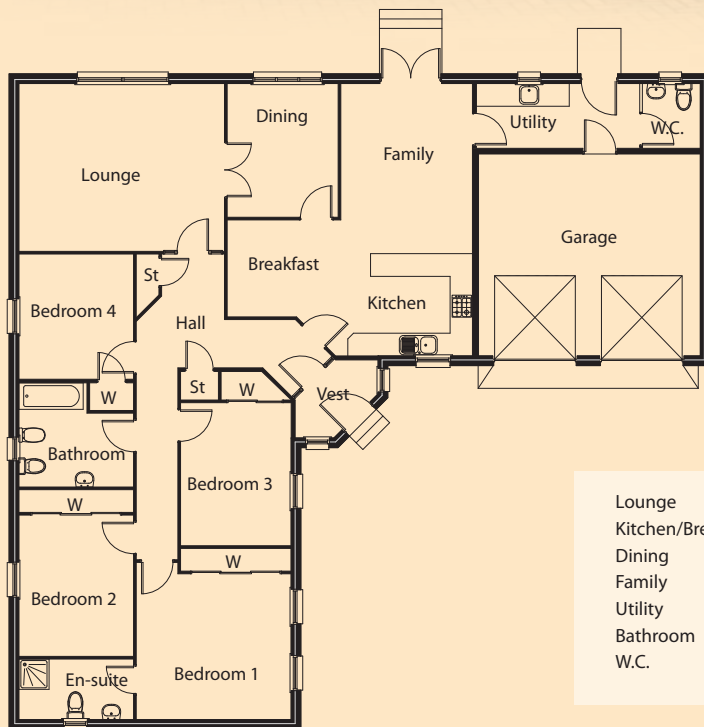


# Lochearn



Floor Plan

Lounge	5.43m x 4.43m	Bedroom 1	4.10m x 3.85m
Kitchen/Breakfast	6.47m x 3.60m	En-Suite	3.03m x 1.60m
Dining	3.53m x 2.93m	Bedroom 2	3.73m x 3.03m
Family	3.60m x 3.47m	Bedroom 3	3.70m x 2.90m
Utility	4.25m x 1.70m	Bedroom 4	3.30m x 3.03m
Bathroom	3.03m x 2.73m	Garage	5.85m x 5.33m
W.C.	1.70m x 1.53m		

Floor Area: 200.90sqm (incl garage floor area @ 31.2sqm) Frontage - 18.5m Depth - 17.3m

The information and illustration above are intended as a preliminary guide only.