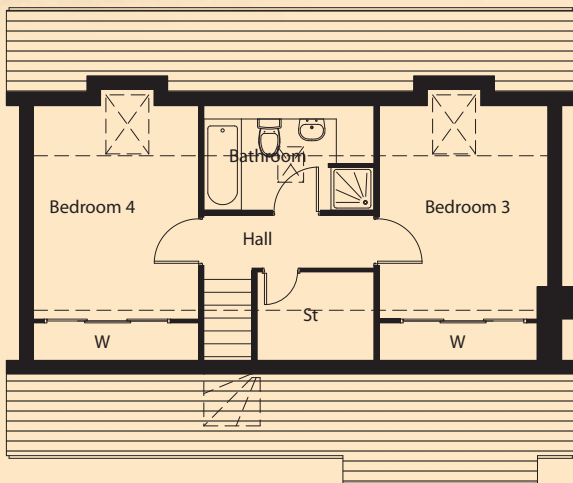
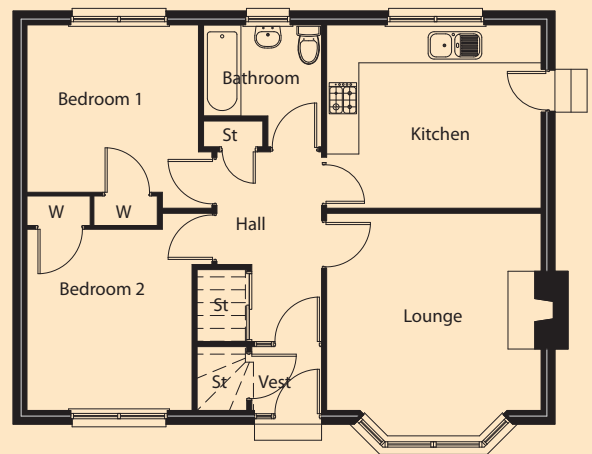


Portree



First Floor Plan



Ground Floor Plan

Lounge	4.00m x 4.15m	Bedroom 2	3.40m x 3.10m
Kitchen	4.00m x 3.42m	Bedroom 3	3.90m x 3.15m
Bathroom	2.20m x 1.70m	Bedroom 4	3.90m x 3.10m
Bedroom 1	3.10m x 3.20m	Bathroom	3.17m x 1.95m

Floor Area: 115.87 sqm Frontage - 10.1m Depth -

The information and illustration above are intended as a preliminary guide only.