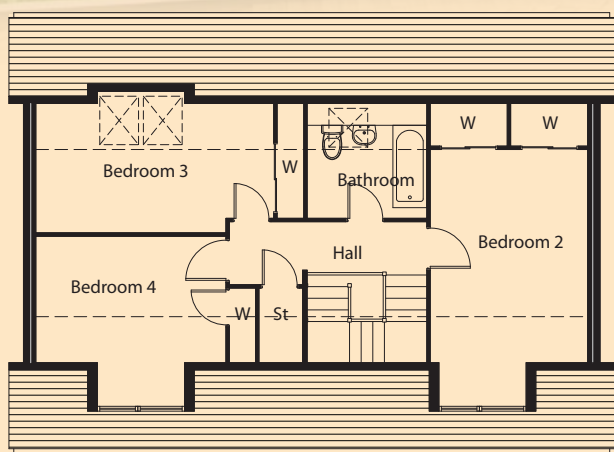
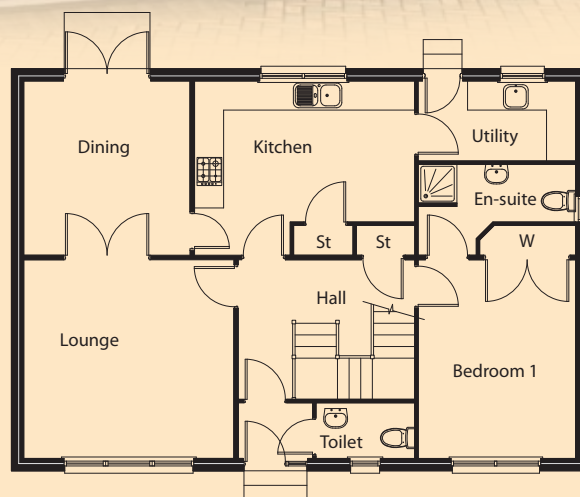


Staffin



First Floor Plan



Ground Floor Plan

Lounge	4.31m x 4.10m	Bedroom 4	3.90m x 3.50m
Kitchen	4.53m x 3.60m	Bathroom	2.47m x 2.37m
Dining	3.60m x 3.43m	Utility	3.30m x 1.56m
Bedroom 1	4.10m x 3.25m	En-Suite	3.25m x 1.19m
Bedroom 2	5.23m x 3.25m	W.C.	2.04m x 1.15m
Bedroom 3	4.91m x 2.92m		

Floor Area: 153.15sqm Frontage - 11.90m Depth - 8.30m

The information and illustration above are intended as a preliminary guide only.