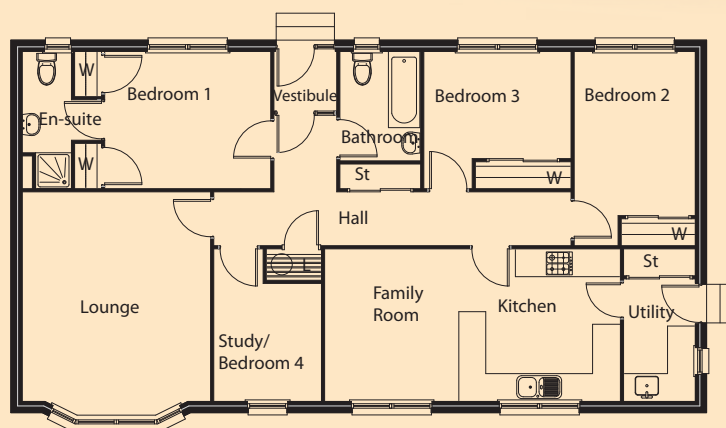


Tobermory



Floor Plan

Lounge	4.67m x 4.20m	Bedroom 4/Study	2.63m x 2.40m
Kitchen/Family	6.59m x 3.40m	Utility	2.73m x 1.60m
Bedroom 1	3.70m x 3.06m	Bathroom	2.44m x 1.80m
Bedroom 2	3.60m x 2.70m	En-Suite	3.06m x 1.10m
Bedroom 3	3.28m x 2.40m		

Floor Area: 117.0sqm Frontage - 15.5m Depth - 8.3m

The information and illustration above are intended as a preliminary guide only.